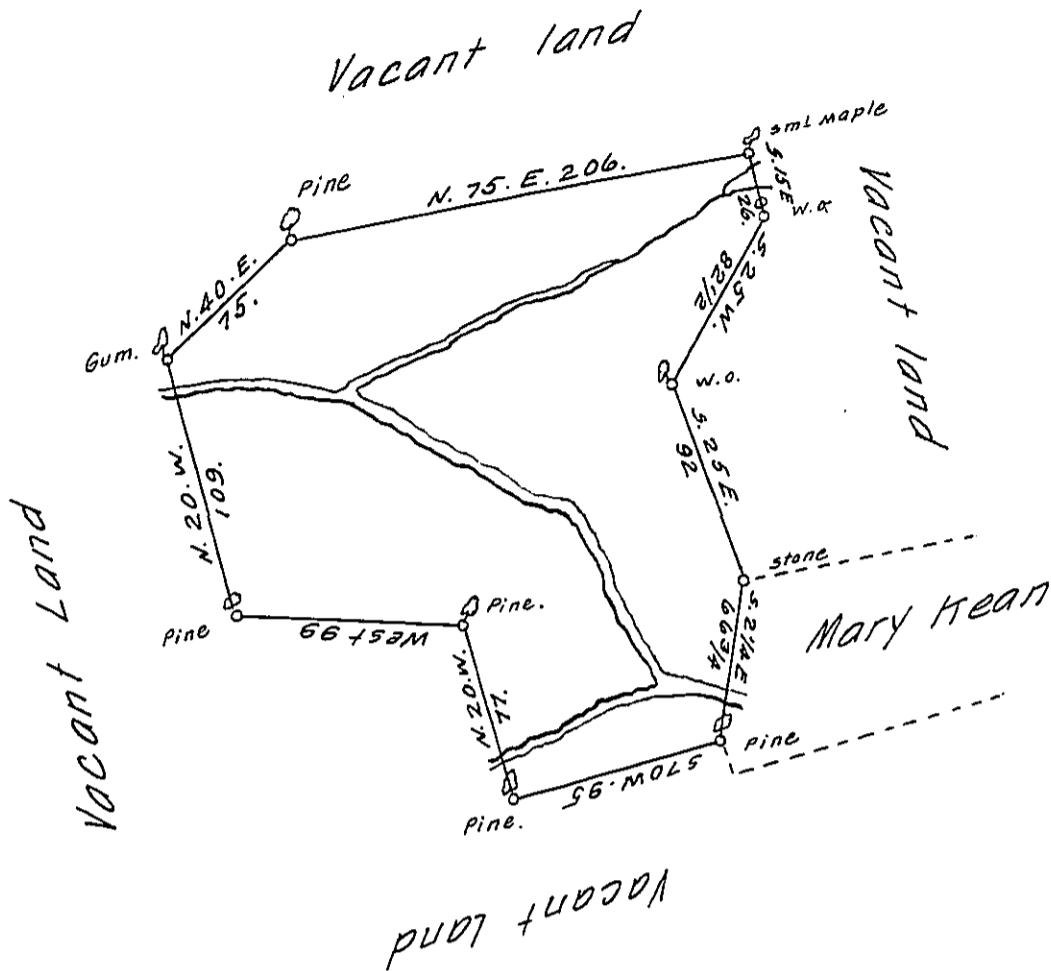


Hazle -  
Luzerne.



By Virtue of a Warrant dated the 7<sup>th</sup> September 1789. Surveyed  
 the 21<sup>st</sup> June 1790. to Patty Kean the above described tract of  
 Land situate on Bever Pond creek a Middle branch of Quacake  
 in the County of Northampton. containing two hundred & sixty  
 eight Acres three quarters and allowance of six & Cent & ca

To Richard T. Leech Esquire }  
 Surveyor General.

& Geo. Palmer D.S.

IN TESTIMONY that the above is a copy of the original remaining on file in  
 the Department of Internal Affairs of Pennsylvania, made  
 conformably to an Act of Assembly approved the 16th day of  
 February, 1833, I have hereunto set my Hand and caused  
 the Seal of said Department to be affixed at Harrisburg,  
 this... eighteenth ... day of October ... 1911.

*Nancy Howell,*  
 Secretary of Internal Affairs.